

The Lily



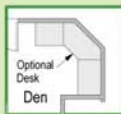
Traditional Elevation



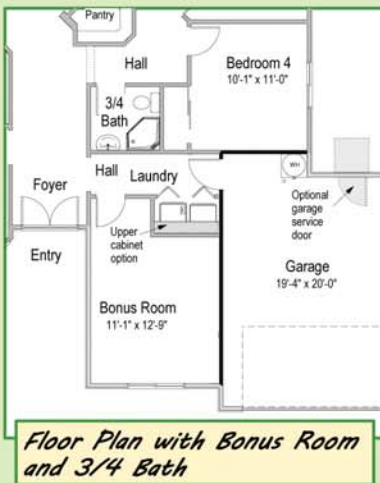
Spanish Elevation



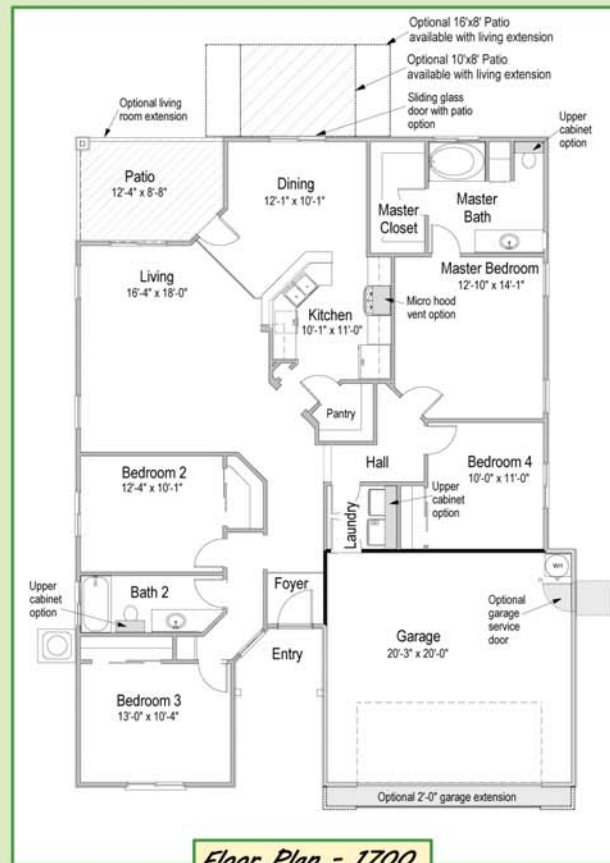
Optional Den



Optional Fireplace



Floor Plan with Bonus Room and 3/4 Bath



Floor Plan - 1700

1700 Square Feet

One Story

4 Bedroom

2 Bath

Optional Den

Optional Desk (Den)

Optional Media Center (Den)

Optional Living Room Extension

Optional Garage Service Door

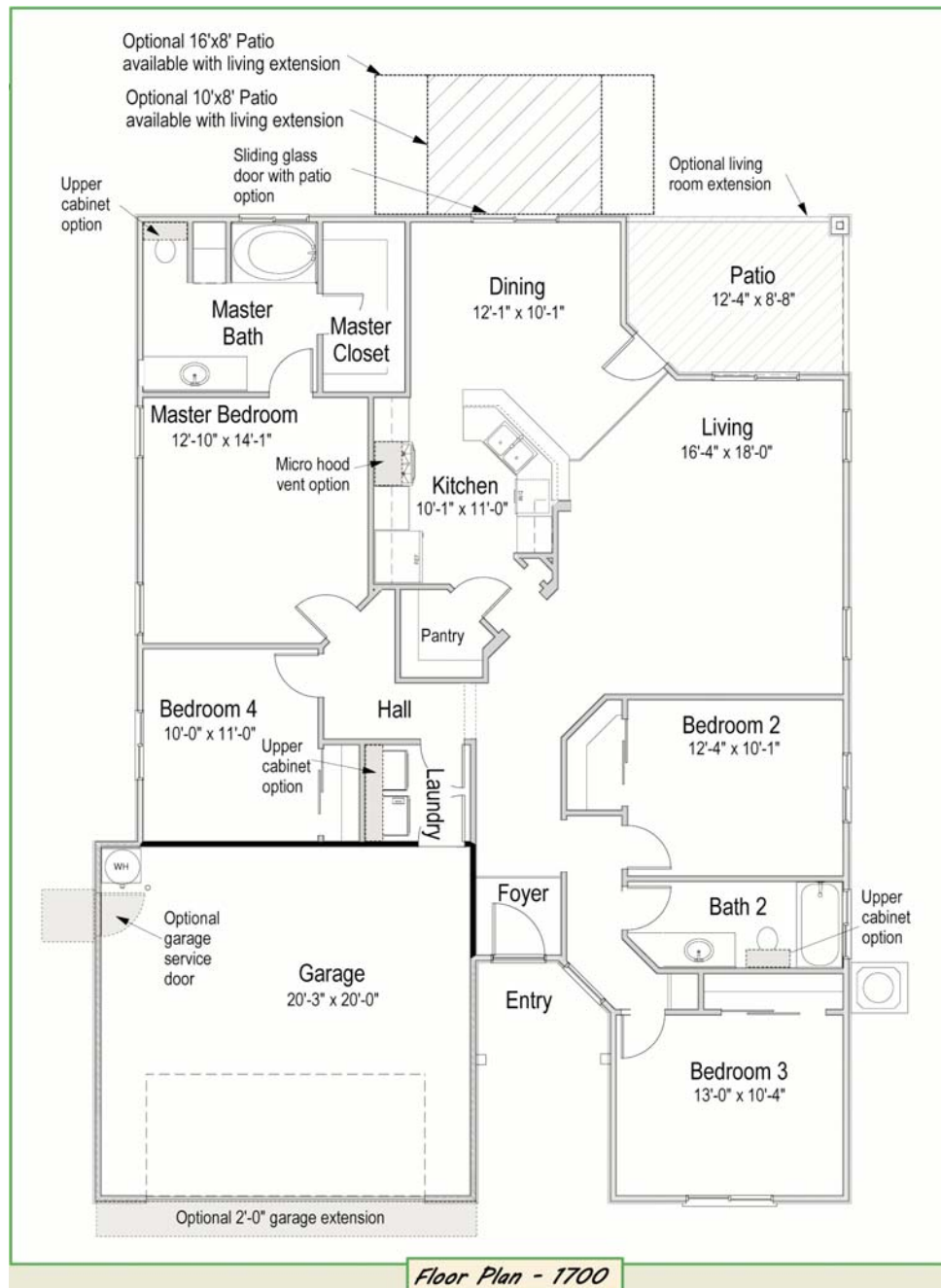
Optional Bath Cabinet

Optional Microwave above cooktop

Optional Cabinet above Laundry

Optional 3/4 Bath

The builder reserves the right in its sole discretion to make changes or modifications to maps, plans, specifications, materials, textures, features and colors without notice. All maps, plans and illustrations are artist's conception. Square footages quoted are approximate. Bright Design Homes expressly reserves its common law copyright and other property rights in these plans.



Froehlich Homes has been the industry leader in Kern County for over 23 years. Superior craftsmanship and breathtaking designs have set the standard for quality homebuilding and are the signature of Froehlich Homes.

With our newest branch of the family, BrightDesign Homes, we are raising the bar and going green. BrightDesign homes adhere to the same level of quality as our Froehlich luxury homes. These innovative designs contain energy efficient amenities with top-of-the-line appliances and quality materials, and are built with sustainable construction



materials whenever possible. Our homeowners choose paint, carpet/flooring, cabinet and countertop selections from a wide array of designer choices.

Our BrightDesign neighborhoods offer single family homes that combine the elegance and attainability that your family needs with inviting and conveniently located neighborhoods that your family will love. We offer the best value in new homes your money will buy in Bakersfield and invite you to visit our models and see for yourself. Go to www.BrightDesignHomes.com for more information.